

Walsh Bay Arts Precinct

PROJECT UPDATE – SEPTEMBER 2021

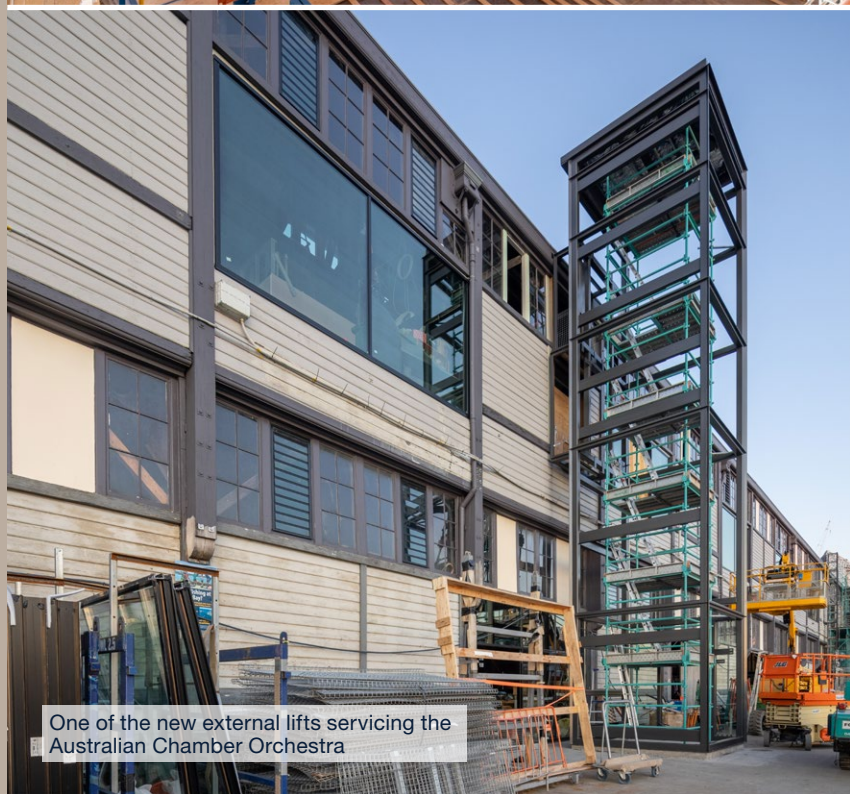
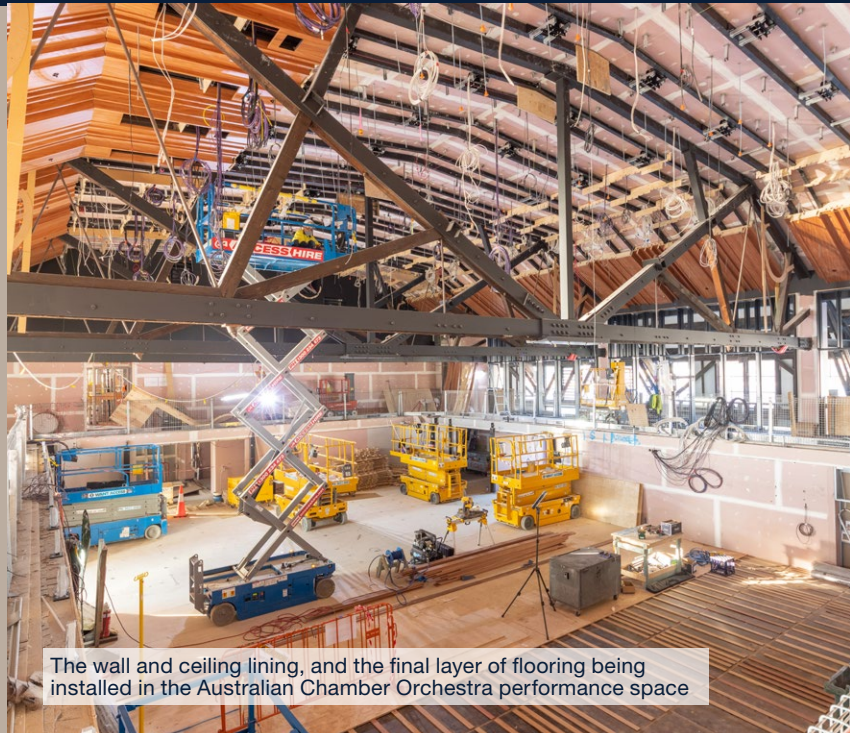
Despite the challenges with COVID-19, construction at Pier 2/3 is continuing with the team working towards completing construction by the end of 2021.

Upcoming work

With the project working towards completion, works over the next three months will be focused on finalising all construction works and testing and commissioning all the tenants' spaces in preparation for the resident companies: Australian Chamber Orchestra, Australian Theatre for Young People and Bell Shakespeare.

Construction update

- » The gantries on the eastern side of Pier 2/3 have been installed. The gantries on the western side will be fully installed in the coming weeks.
- » The internal and external lifts are being installed.
- » Bathrooms and other wet areas are progressively being completed.
- » The timber wall and ceiling lining and shrouds are changing the look of the performance space for the Australian Chamber Orchestra. Special glazing on the western and eastern sides of the performance space will allow natural light in and still support acoustic conditions.
- » The back of house areas for the Australian Chamber Orchestra are being sheeted and the mechanical rooms are being fitted out.
- » Finishing touches are being applied to the Bell Shakespeare spaces before testing and commissioning will commence.



For more information:

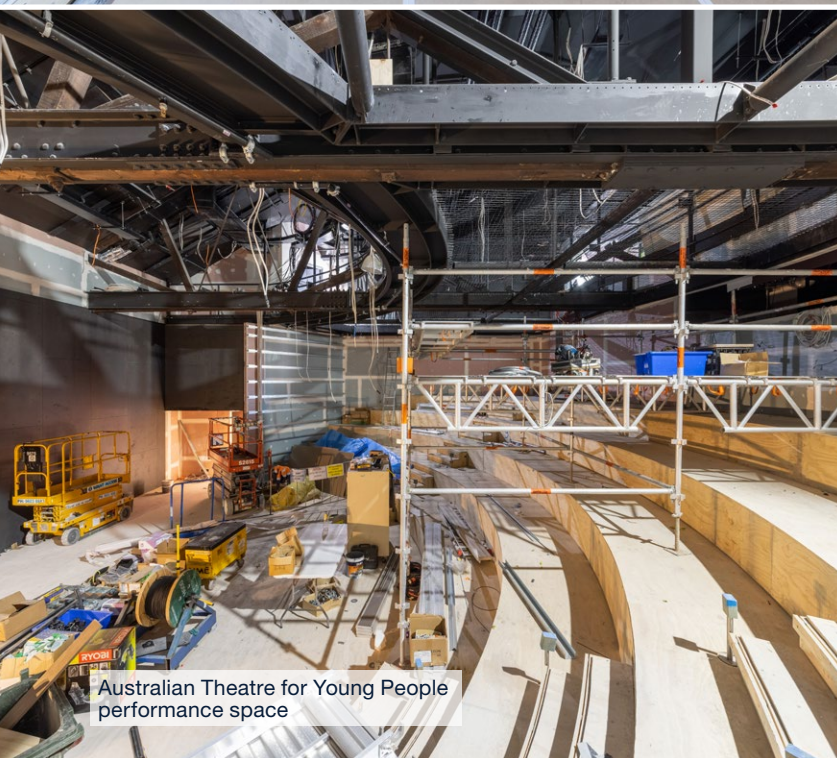
 infrastructure.nsw.gov.au/walshbay

 walshbayinfo@infrastructure.nsw.gov.au

 1800 717 648



Bell Shakespeare studio space nearing completion



Australian Theatre for Young People performance space

- » The final wall cladding in the Australian Theatre for Young People's performance space is being installed. Once completed, works will be focused on installing the audio and lighting technology.
- » Now that the glass balustrading has largely been installed, the Ironbark floors have been laid in the Bell Shakespeare and Australian Theatre for Young People corridors.
- » The ceiling heaters, kitchen and bar are being installed in the commercial space.

COVID-19

A comprehensive COVID-19 Safety Plan is in place for the site with safety measures such as controls on movements between sites, reduced contact between workers within the site and improved tracing capability.

In line with the Environmental Planning and Assessment (COVID-19 Development— Construction Work Days) Order (No 3) 2021 work order, Richard Crookes Constructions' working hours include Sundays between 7am and 5pm. Works carried out on Sundays will be largely internal to Pier 2/3 and Richard Crookes Constructions will take all feasible and reasonable measures to minimise noise.

Safety is the number one priority for Infrastructure NSW and Richard Crookes Constructions and we are following all health advice in relation to construction sites.

Construction Hours

The Walsh Bay Arts Precinct Redevelopment Project is currently complying with the Environmental Planning and Assessment (COVID-19 Development — Construction Work Days) Order (No 3) 2021 work order. The current construction hours are:

Monday to Saturday: 7am – 6pm.

Sunday: 7am – 5pm. Any works on Sundays will, where reasonable and feasible, minimise noise and largely be confined to progressing internal works.

Contact us

For any enquiries about construction at Pier 2/3, please continue to contact Infrastructure NSW on 1800 717 648 or walshbayinfo@infrastructure.nsw.gov.au.

For any enquiries about operations at Wharf 4/5, please contact the Create NSW Precinct Manager on walshbayartsprecinct@create.nsw.gov.au.

For more information:

 infrastructure.nsw.gov.au/walshbay

 walshbayinfo@infrastructure.nsw.gov.au

 1800 717 648

