

Walsh Bay Arts Precinct

PROJECT UPDATE – JULY 2021

With the project nearing completion, construction at Pier 2/3 is full steam ahead. There are a range of construction activities occurring on site, from acoustic treatments to the roof to tiling bathrooms.

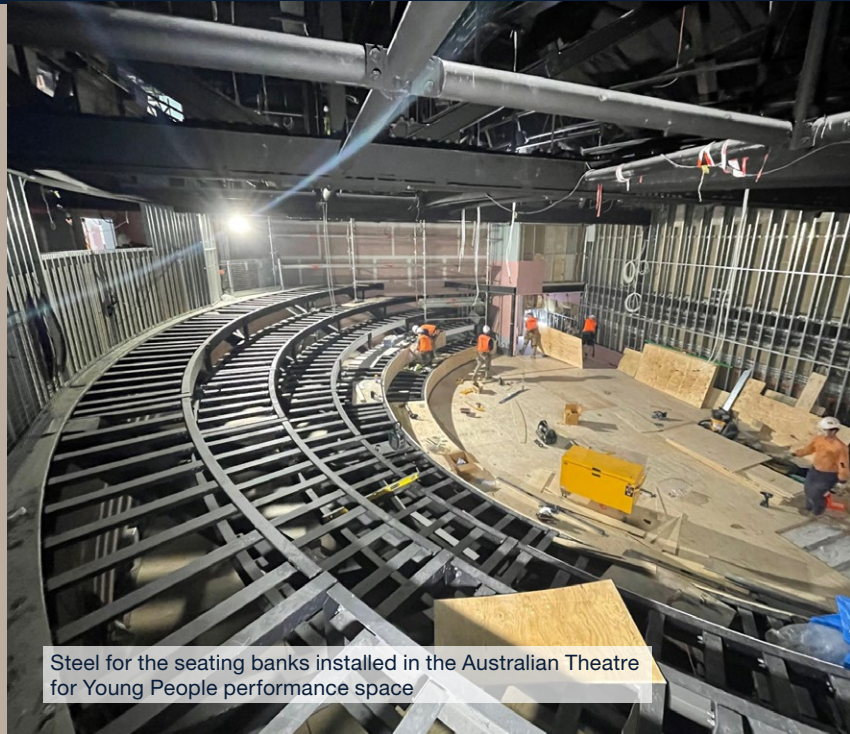
Construction update

- » Architectural finishes such as timber claddings and acoustic linings in the Bell Shakespeare and Australian Theatre for Young People spaces are starting to be installed.
- » The Bell Shakespeare and Australian Theatre for Young People office spaces are taking shape with doors hung and glazing installed.
- » Steel has been installed for the seating banks in the Australian Theatre for Young People performance space.
- » Works to install the acoustic ceiling in the Australian Chamber Orchestra space have started.
- » The acoustic sub floor has have been fully installed in the Australian Chamber Orchestra performance space.
- » Critical works to the pier's sub-structure have been completed.

Upcoming work

Works expected to be carried out over the next three months include:

- » Installing the internal lifts.
- » Continuing painting the external façade.
- » Erecting the external gantries to the side of the Pier.
- » Continuing to install the internal architectural finishes in the Bell Shakespeare and Australian Theatre for Young People spaces.
- » Starting the commissioning of electrical, mechanical and audio visual services.



Steel for the seating banks installed in the Australian Theatre for Young People performance space



Architectural timber cladding installed in the Bell Shakespeare studio space

For more information:

 infrastructure.nsw.gov.au/walshbay

 walshbayinfo@infrastructure.nsw.gov.au

 1800 717 648



Australian Chamber Orchestra performance space

Tenant site tour of Pier 2/3

Last month Create NSW, Infrastructure NSW and Richard Crookes Constructions conducted a site tour for the soon to be resident companies of Pier 2/3. We were delighted to take representatives from Bell Shakespeare, Australian Chamber Orchestra and Australian Theatre for Young People through the construction site. Site tours are conducted quarterly to show the tenants how their spaces are developing.



View from Pier 2/3, Murray Harris Photography

Construction Hours

The Walsh Bay Arts Precinct Redevelopment Project is currently complying with the Environmental Planning and Assessment (COVID-19 Development – Construction Work Days) Order 2020. The current construction hours are:

Monday to Friday:

7am – 6pm

Saturday: 7am – 5pm.

Contact us

For any enquiries about construction at Pier 2/3, please continue to contact Infrastructure NSW on 1800 717 648 or walshbayinfo@infrastructure.nsw.gov.au.

For any enquiries about operations at Wharf 4/5, please contact the Precinct Manager on walshbayartsprecinct@create.nsw.gov.au.

For more information:

 infrastructure.nsw.gov.au/walshbay

 walshbayinfo@infrastructure.nsw.gov.au

 1800 717 648

